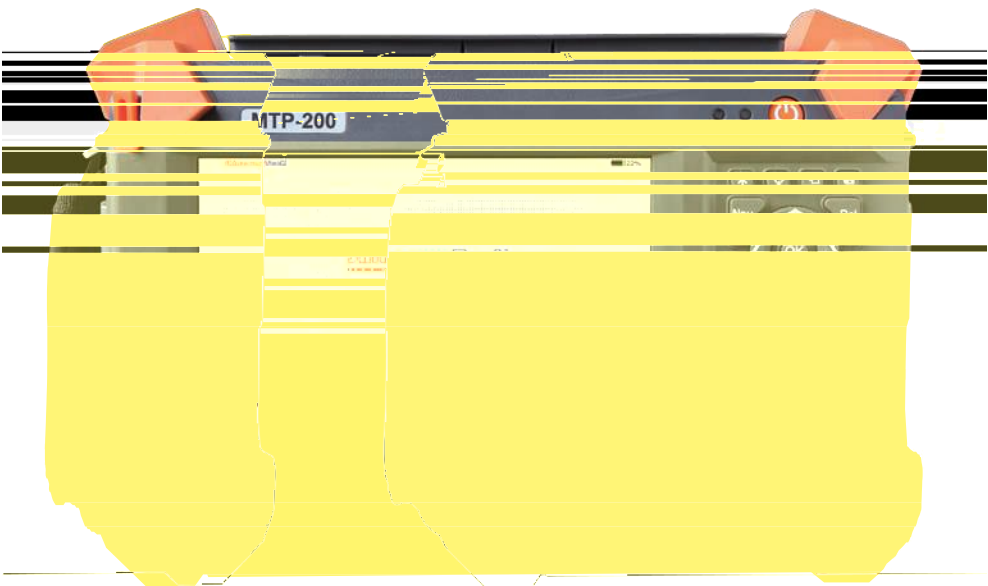


**ShinewayTech®**

CWDM / DWDM / PON 3-in-1 OTDR



Hand-held High Performance OTDR

# MTP-200-T100

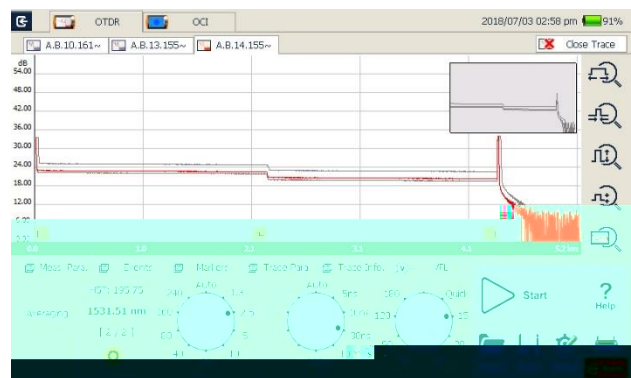
## Series

## Multi-Function and High Performance OTDR Testing

- Unique combination of 96 DWDM OTDR + 18 CWDM OTDR \* 0514
- Dynamic range up to 38dB (DWDM/PON OTDR), 36dB for CWDM OTDR
- Short zone: EDZ 1m, ADZ 4m
- Tunable laser source with 50/100GHz spacing
- Auto/manual test and analysis
- Multi-wavelength testing
- Visible laser source function
- Fault locating, fiber length/loss/return loss measurement, connector/ splice/ splitter/ macro bend/fiber-end detection
- GR-196-CORE (.SOR) file format
- SOR and JPG file format
- Flexible file naming
- LinkImage smart graphic analysis

## Optimized Platform Performance

- Lightweight, 2.1kg
- 7 inch touch screen
- Windows user interface for easy operation
- Damp-dust-shock proof
- 10 hours continuous operation
- Supports WiFi / Bluetooth / GPS
- Direct printing function(compatible with PCL printers)
- Remote/local control by PC



## MTP Suite PC Software

- Multi traces analysis
- Single/multi traces printing in one report
- Batch editing and printing
- Bidirectional traces analysis
- CSV report formats
- Remote control function



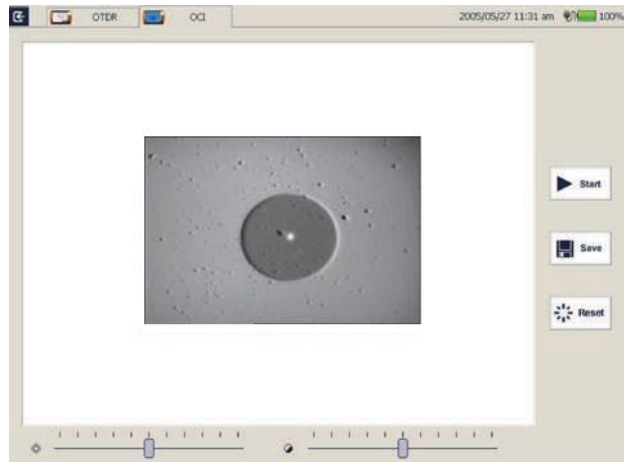
## Network Remote Control Module (Optional)

Convenient networking  
Remote control instrument operation



## Optical Connector Inspector Module (Optional)

Focusing knob for fast focus  
Eye-safe and clear video viewing  
Interchangeable connector tips



## Optical Power Meter Module (Optional)

Multi-wavelength Calibration  
High Precision  
Convenient Operation



## Applications

- DWDM network fiber characterization
- DWDM live testing
- Verification of ROADM channel routing
- Test through OADM and MUX/DMUX

<b>MTP-200 Series</b>	
Display	7 inch TFT Touch Screen (800x480)
Connectivity	USBx2; 10/100Mbit/s RJ-45x1
Memory	2GB
Power Supply	Rechargeable Li-Ion Battery/AC Adapter
Battery Life	10 hours continuous operation
Working Temp.	-20°C - 50°C
Storage Temp.	-40°C - 60°C
Humidity	0 - 95% (Non-Condensing)
Weight	2.1kg
Dimensions (LxWxH)	290x175x75mm

PM100 Normal Power Meter Module (Optional)	
Calibrated Wavelength	850nm, 1300nm, 1310nm, 1490nm, 1550nm, 1625nm, 1650nm
Measurement Range	-70dBm - +6dBm (-60dBm - +6dBm @ 850nm)
Detector Type	InGaAs
Display Resolution	0.01dB
Accuracy	± 5% ± 0.01nW (±0.5dB@850nm)

\*Specifications subject to change without notice

### Notes

- (1) Dynamic range measurement at 20µs pulse width and 180s averaging time;
- (2) Dead Zone measurement at 0.6Km and reflection <-45dB; EDZ measurement at 5ns, ADZ measurement at 10ns.

### Order Information:

#### Standard Package

MTP-200, Lithium Battery, CD Certificate

0

2

(, Carrying Case, Warranty card, Calibration

#### Optional Modules:

PM100: Optical Power Meter Module

MCI100: Optical Connector Inspector Module

RC100: Remote control Module

LM100: Link Image Module



