

# Optical Cable Routing Calibrator



CR04 Optical Cable Routing Calibrator adopts the principle of distributed optical fiber vibration sensing, transforming the communication optical cable into a microvibration sensor. Any position of the optical cable can sense the surrounding disturbance information. When the ground manhole cover or pole above the target optical cable is knocked the vibration will be transmitted to the optical cable. CR04 can accurately identify the knocking event, accurately locate the knocking position, and synchronize the test data to the technician's handheld PAD terminal.



CR04 Main Unit

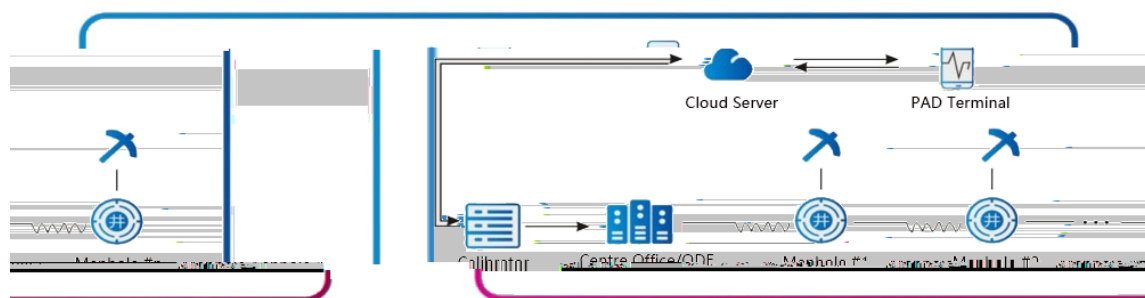


PAD Terminal

CR04 Optical Cable Routing Calibrator can search and locate buried optical cables, pipeline optical cables, and overhead optical cables, generate data on the specific locations of optical cable junction boxes, breakpoints, and optical loss points, provide maintenance services for optical cable lines and pipeline construction, improve the work efficiency of optical cable line maintenance technicians to understand the overall status of optical cables.

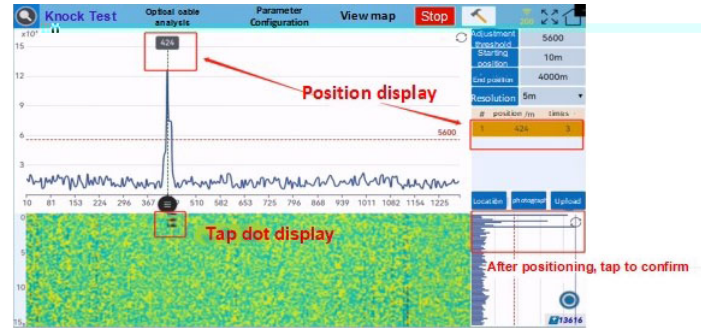
## Key Features

- ◆ Compact & lightweight, easy for carrying and suitable for testing in field
- ◆ Multi-function in one single unit (VSTest, OTDR and VFL)
- ◆ 4-channel optical cable connection to improve maintenance efficiency
- ◆ Knock the manhole cover or ground surface to verify the cable route
- ◆ Only one technician can complete on-site testing in order to reduce OPEX
- ◆ Obtain the information of longitude, latitude and distance information of knocking point
- ◆ Maximal test distance 50KM for VSTest (OTDR)
- ◆ Realtime display of results with high accuracy

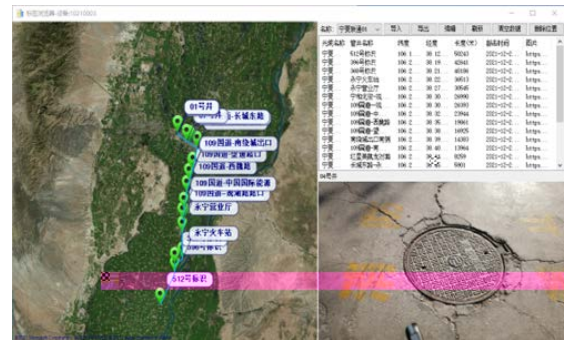
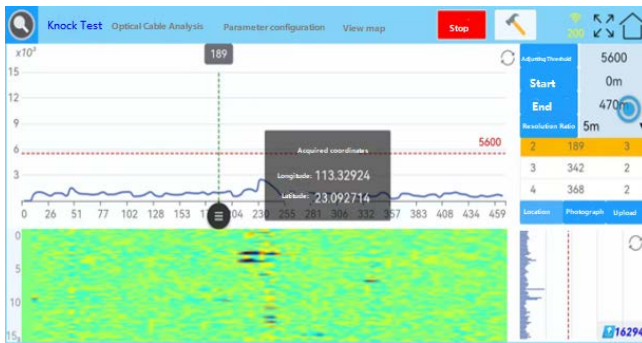


## Advantages / Benefit

- ◆ Knock the manhole cover to verify whether the target cable exists, reducing the operation time to open the manhole cover



- ◆ Obtain the latitude and longitude information of the knocking point in real time and synchronize with GIS map together with the picture of the knocking point



- ◆ Pinpoint the target cable from cable bundles with the same route.

